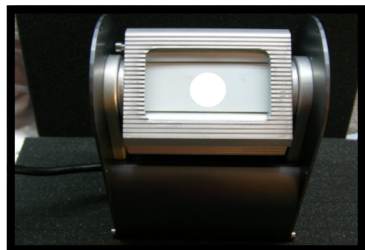


Leading Edge Designs

Direct Manufacture Distributors of LED lights

Universal Luminaire™

**Increase Safety and Visibility,
while Reducing Energy usage.**



Multiple Sizes Available:

UL1

**Initial Delivered
Lumens: 2500
Total System Draw: 37w**

UL2

**Initial Delivered
Lumens: 5000
Total System Draw: 63w**

UL3

**Initial Delivered
Lumens: 7500
Total System Draw: 95w**

Larger Sizes available.

Green Technology.

Recyclable

Patent Pending.

Increase Safety with greater visibility

– The LED's provide Bright Day Light White for ultimate security.

Reduce Energy consumption– Each unit draws 37 W TSD, 63W TSD, 95W TSD or 115TSD.

Technology enables an energy savings up to 50% over traditional Lighting packages.

Decrease Maintenance– The 10+ year life-time of LED fixtures reduces maintenance costs, Fixture is fully recyclable.

Directional– Each unit has ability to direct light where you need it ,eliminating external louvers to block stray light.

Recyclable: USA Made in Colorado and has a fully recyclable housing.



For More Information:

www.LED-LTD.us

or Call us at:

619-777-6LED (6533)



Powered by UL Certified Driver



Leading Edge Designs

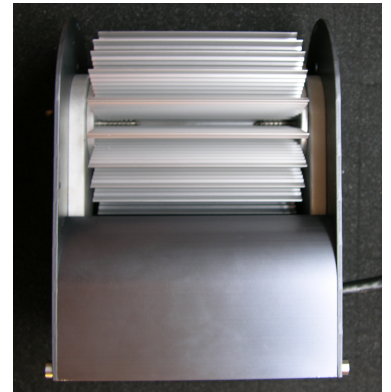
Direct Manufacture Distributors

Universal Luminaire™ (cont'd)

SPECIFICATIONS: LED Multi-function Universal Luminaire are designed for maximum thermal dissipation of heat away from the LEDs. Limiting the temperature rise of the LED at the mounting position, during continuous operating conditions insures projected life and luminous output.

CONSTRUCTION: The High Output, Multi-function Universal Luminaire™ consists of durable lightweight aluminum housing. Each housing and LED array are designed for interior or exterior applications for years of hassle-free beauty and function. Flat tempered clear glass lens. Light array has 180 degree rotation capability to direct the light.

- **Wattage:** 30-200 Watts
- **Replaces:** HPS 70-150watt, 200-250, 400, 1k and 2k MH MV
- **Color Temperature:**
 - Warm White (3,000-3,500K)
 - Natural White (4,000-4,500K)
 - Day White (5,500-6,000K)
- **Total delivered Lumens:** 2.5k - 17.5k
- **Housing sizes:** 4x4x6; 4x4x8; 4x4x12
- **Life Hours:** 70,000-100,000+
- **Ambient Temperature:** -13 - 125°F
- **Working Voltage:** AC 120V, 220-240V, 277V
- **Warranty:** 5 years



MOUNTING: Aluminum angle template for mounting over a 4" recessed gang box, or 1/2" NPT pipe, optional adjustable yoke, allows horizontal / vertical swivel. Includes hardware.

ELECTRICAL: UL1310, Class 2 compliant or UL 8540 appropriate drivers suitable for damp or dry locations. Housing and internal components are rated IP 66 or 67. Designed for outdoor or indoor applications, operating from 45-60Hz \pm 3 Hz AC line over a voltage ranging from 90 volts to 305 volts. Each driver is an efficient switcher with a power factor of greater than 0.91 with an input current of less than 20% Total Harmonic Distortion (THD). Fluctuations on the line voltage have no visible effect on the luminous output. Each driver includes voltage surge protection to withstand high repetition noise transients, while meeting emission limits as set forth by the FCC Title 47, Subpart B, Section 15.347
480 volt 50/60 Hz driver available at an additional cost.

ENVIRONMENTAL: All light engines fully comply with the Restriction of Hazardous Substances Directives (RoHS) adopted in February 2003 by the European Union.

QUALITY ASSURANCE: LED lights utilize UL wet or damp rated, and FCC tested and approved Custom drivers. IN production, each light engine panel is burned-in for an 8-hour period and certified for compliance by the manufacturer's internal QA process. A quality control tracking label, including date of manufacture, is mounted on the inside of the LED light engine panel.

Meets requirements via specific installation method for Dark Sky ratings.

UNIVERSAL MOUNTING: Each wall pack has capabilities of multiple mounting configurations, limited only by space and your imagination...



For More Information:

www.LED-LTD.us

or Call us at:

619-777-6LED (6533)